

Knife-gate valves for water and wastewater



Expertise
Made in Germany.
Made by ERHARD.

Knife-gate valve DN 700 - 1400 Body connection according to DIN 2501, PN 10

Knife-gate valves with rising and non-rising stem with wafer-type design. Available with sealing on one side (Type A) or both sides (Type AB).

Robust design with one-piece body. Suitable for liquids with a solids fraction of up to 5 %. They can be used in: wastewater engineering, stormwater or non-drinking water.

Easy mounting of drives and components such as limit switches. Available with gear and handwheel or gear and electric drive, further drive options available on request. Functionally closed design made from sheet steel as secure protective cage above the valve plate in types with an electric drive.

Effective packing strands made from PTFE – with impregnated fibre strands for reliable seal against the outside. The packing strands are enveloped by a network of fine bronze braids which enables permanent cleaning of the valve plate. At the same time, the friction values of this seal combined with the precise surface of the valve plate results in practical torques for optimum drive design. The maintenance-friendly seal can be easily and safely adjusted during service.

An integrated sink in the body ensures the seat is automatically flushed clean when the valve is closed.

The high-quality EKB coating with 250 µm on all valve parts ensures durability.

Ask us about your tasks,
we would be pleased to advise you.

Body material - depending on design, EN-JL1040 or welded 1.0044

Seat - NBR (further materials available on request)

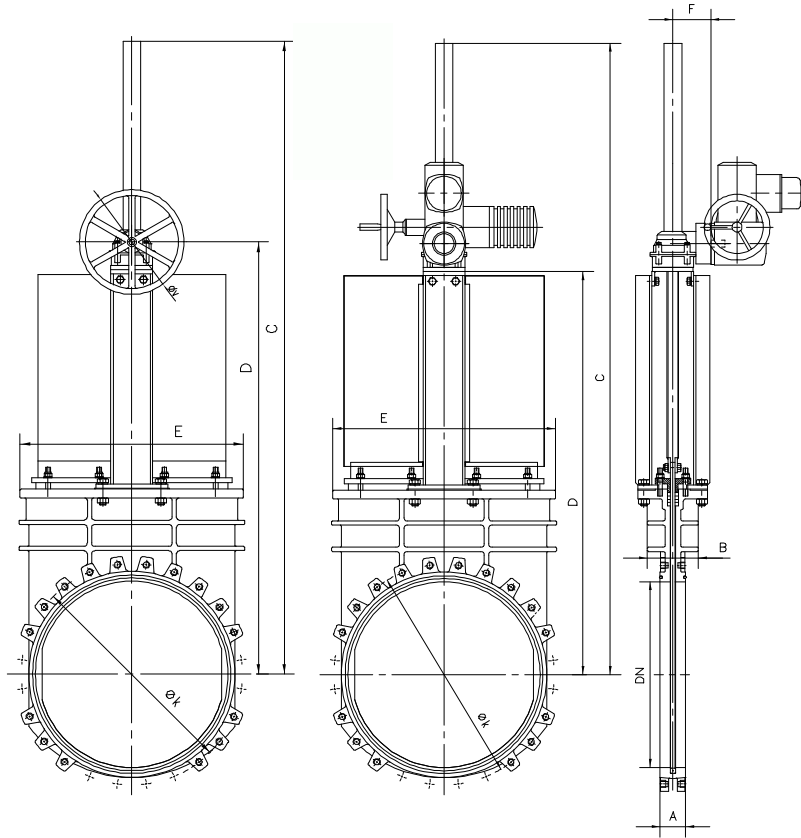
Valve plate - 1.4301

Packing strands - PTFE

Support plates and protective cage - 1.0044

Step - stainless steel with 18% Cr

Connectors - zinc-coated steel

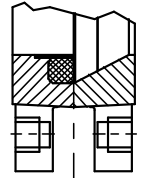


Design Type A

DN 700 – 1400 – PN 2

As end valve up to max. 1 bar

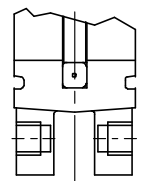
One-sided sealing. NBR seal safely confined in a stainless steel ring.



Design Type AB

DN 700 – 1400 – PN 2 - 10

Sealing on both-sides. NBR profile seal with stainless steel reinforcement confined in the body. Flat flush invert.



| DN | Flange connection dimension, DIN PN 10 | | | | |
|------|--|----|-----|----|------|
| | A | B | C | D | ø K |
| 700 | 16 | 8 | M27 | 22 | 840 |
| 800 | 16 | 8 | M30 | 22 | 950 |
| 900 | 20 | 8 | M30 | 20 | 1050 |
| 1000 | 20 | 8 | M33 | 20 | 1160 |
| 1200 | 22 | 10 | M36 | 22 | 1380 |
| 1400 | 24 | 12 | M39 | 35 | 1590 |

A Number of threaded holes

B Number of through-holes

C Thread

D Thread depth

| Type | DN | PN | A | B | C | D | | E | F | V |
|------|------|----|-----|-----|------|-----------|----------------|------|-----|-----|
| | | | | | | Handwheel | Electric drive | | | |
| A | 700 | 2 | 110 | 320 | 2386 | 1643 | 1564 | 850 | 163 | 450 |
| AB | 700 | 2 | 110 | 320 | 2386 | 1643 | 1564 | 850 | 163 | 450 |
| AB | 700 | 4 | 115 | 320 | 2386 | 1643 | 1564 | 850 | 163 | 450 |
| AB | 700 | 6 | 120 | 320 | 2386 | 1643 | 1564 | 850 | 163 | 450 |
| AB | 700 | 10 | 130 | 320 | 2386 | 1643 | 1564 | 850 | 293 | 450 |
| A | 800 | 2 | 110 | 320 | 2710 | 1857 | 1755 | 950 | 163 | 650 |
| AB | 800 | 2 | 110 | 320 | 2710 | 1857 | 1755 | 950 | 163 | 650 |
| AB | 800 | 4 | 115 | 320 | 2710 | 1857 | 1755 | 950 | 163 | 650 |
| AB | 800 | 6 | 120 | 320 | 2710 | 1857 | 1755 | 950 | 293 | 650 |
| AB | 800 | 10 | 130 | 320 | 2710 | 1857 | 1755 | 950 | 322 | 650 |
| A | 900 | 2 | 110 | 350 | 3070 | 2090 | 1968 | 1055 | 163 | 650 |
| AB | 900 | 2 | 110 | 350 | 3070 | 2090 | 1968 | 1055 | 163 | 650 |
| AB | 900 | 4 | 120 | 350 | 3070 | 2090 | 1968 | 1055 | 163 | 650 |
| AB | 900 | 6 | 125 | 350 | 3070 | 2090 | 1968 | 1055 | 293 | 650 |
| AB | 900 | 10 | 135 | 350 | 3070 | 2090 | 1968 | 1055 | 322 | 650 |
| A | 1000 | 2 | 110 | 350 | 3268 | 2280 | 2178 | 1150 | 163 | 650 |
| AB | 1000 | 2 | 110 | 350 | 3268 | 2280 | 2178 | 1150 | 163 | 650 |
| AB | 1000 | 4 | 120 | 350 | 3268 | 2280 | 2178 | 1150 | 213 | 650 |
| AB | 1000 | 6 | 125 | 350 | 3268 | 2280 | 2178 | 1150 | 322 | 650 |
| AB | 1000 | 10 | 135 | 350 | 3268 | 2280 | 2178 | 1150 | 390 | 650 |
| A | 1200 | 2 | 150 | 400 | 3893 | 2846 | 2573 | 1350 | 212 | 850 |
| AB | 1200 | 2 | 150 | 400 | 3893 | 2846 | 2573 | 1350 | 212 | 850 |
| AB | 1200 | 4 | 155 | 400 | 3893 | 2846 | 2573 | 1350 | 322 | 850 |
| AB | 1200 | 6 | 165 | 400 | 3893 | 2846 | 2573 | 1350 | 322 | 850 |
| AB | 1200 | 10 | 180 | 400 | 3893 | 2846 | 2573 | 1350 | * | 850 |
| A | 1400 | 2 | 150 | 400 | 4852 | 3312 | 2733 | 1550 | 212 | 850 |
| AB | 1400 | 2 | 150 | 400 | 4852 | 3386 | 2733 | 1550 | 212 | 850 |
| AB | 1400 | 4 | 160 | 400 | 4852 | 3386 | 2733 | 1550 | 322 | 850 |
| AB | 1400 | 6 | 170 | 400 | 4852 | 3386 | 2733 | 1550 | 390 | 850 |
| AB | 1400 | 10 | 190 | 400 | 4852 | 3386 | 2733 | 1550 | * | 850 |

ERHARD GmbH & Co. KG

Postfach 1280 · D-89502 Heidenheim · Meeboldstraße 22 · D-89522 Heidenheim

Phone +49-7321-320-0 · Fax +49-7321-320-525 · E-Mail export@erhard.de · Website www.erhard.de

46129 EN (09/09)